

Discover Villas at Greenview.

Welcome to the **Villas at Greenview**, a premiere townhome community located in beautiful and serene St. Mary's County. Convenient to the Patuxent Naval Air Station, St. Mary's River State Park and the Patuxent River, residents choose from luxuriously appointed two and three bedroom townhomes.

Well designed, spacious and bright floor plans feature private patios and storage, large rooms with plenty of storage, contemporary kitchens with full sized washers and dryers and mini-blind window coverings. Townhomes are finished in modern neutral tones.

Villas at Greenview is a professionally managed community providing 24-hour emergency maintenance and beautifully landscaped common grounds. Community features include a swimming pool and sundeck, clubroom, fitness center, business center, tot lot and ample parking. Selected townhomes feature bay windows. Detached garages are available.

Close-by recreational areas – parkland and waterways – shopping, restaurants, schools and major thoroughfares provide a remarkable lifestyle for residents. Discover your home at Villas at Greenview.

Directions

From I-495 take Branch Avenue exit 7 towards Waldorf. Follow Rt. 5 south, stay straight onto Rt. 235. From Rt. 235 turn right onto Rt. 237/Chancellors Run Road. Right onto Longfields Boulevard, left onto Jillian Court.

Contact

45660 Jillian Court
Great Mills, MD 20634

Phone: 240.725.0164
Fax: 240.725.0179
E-mail: villas@covepm.com




45660 Jillian Court
Great Mills, MD 20634

Phone: 240.725.0164
Fax: 240.725.0179
E-mail: villas@covepm.com

Professionally Managed By

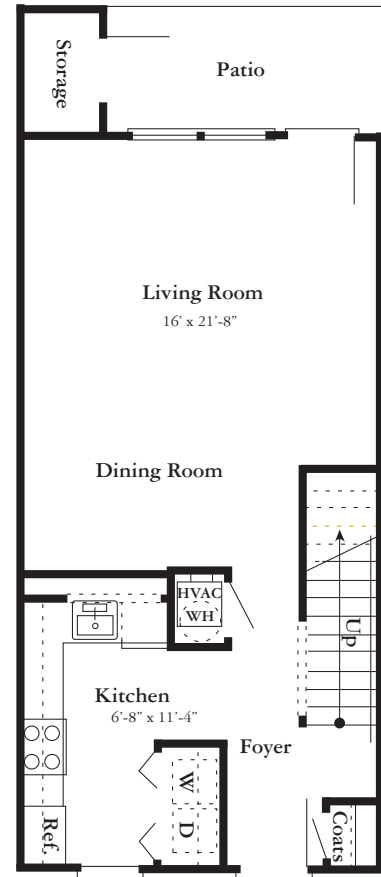


 We pledge to the letter and spirit of U.S. policy for the achievement of equal housing opportunity throughout the nation. We encourage and support an affirmative advertising and marketing program in which there are no barriers to obtaining housing because of race, color, religion, sex, handicap, familial status or national origin.

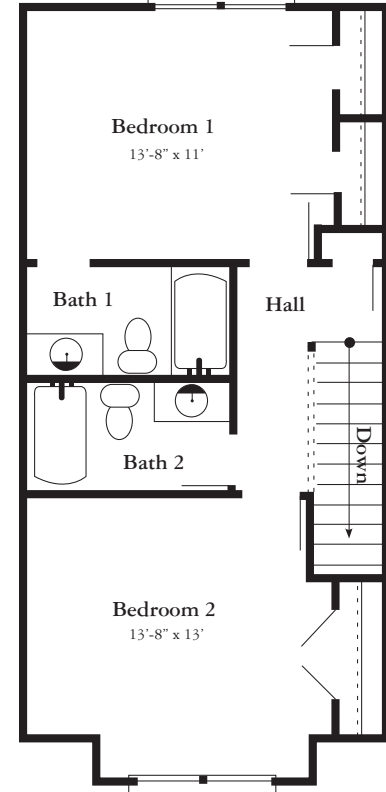


The Patuxent

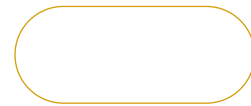
Two Bedroom + Two Bath
All room sizes are approximate.



First Floor

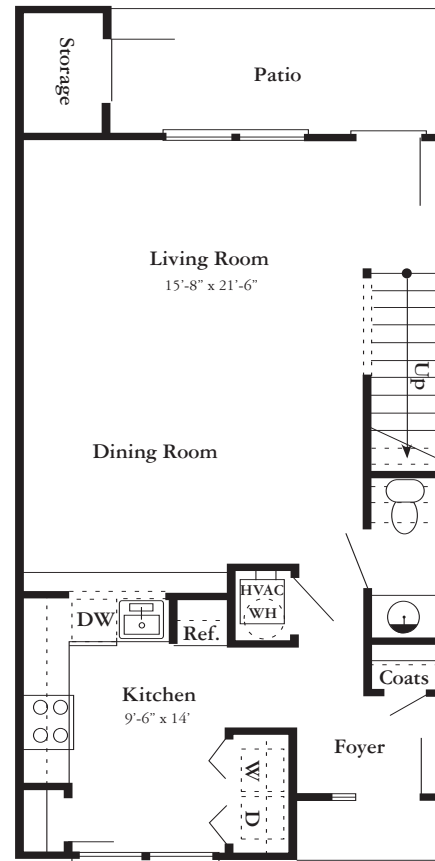


Second Floor

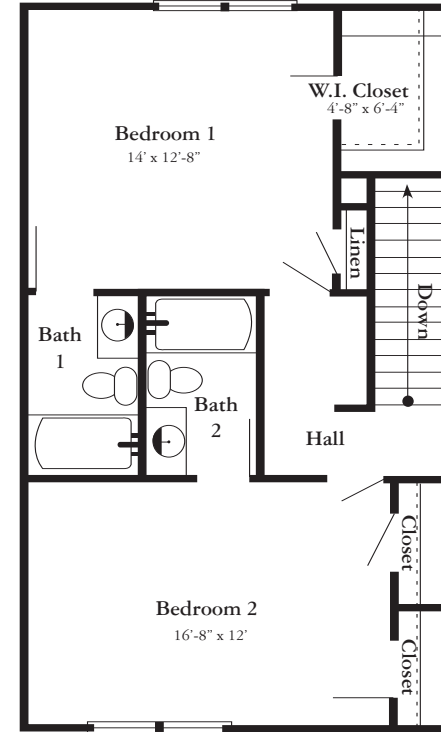


The Potomac

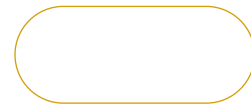
Two Bedroom + Two and a Half Bath
All room sizes are approximate.



First Floor

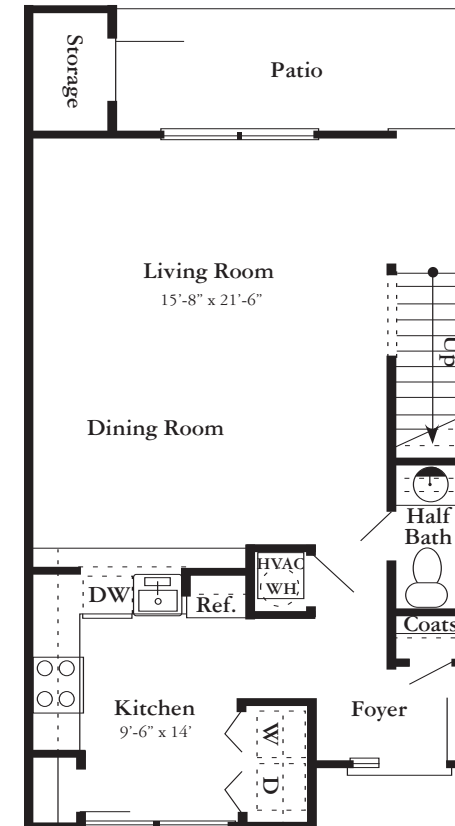


Second Floor

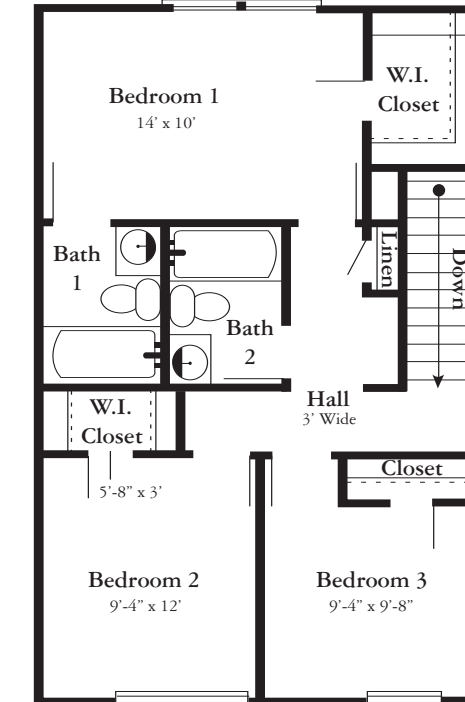


The Lexington

Three Bedroom + Two and a Half Bath
All room sizes are approximate.



First Floor

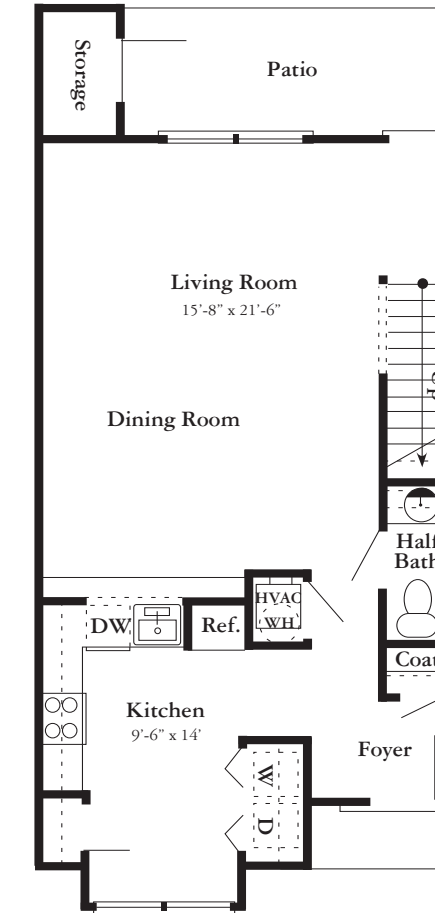


Second Floor

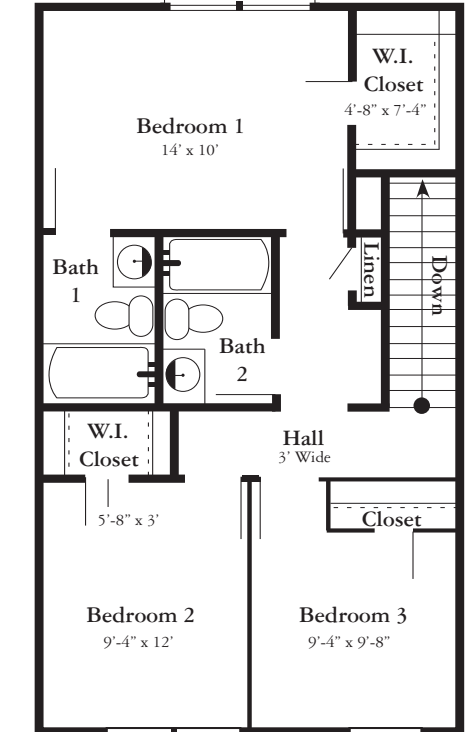


The Chesapeake

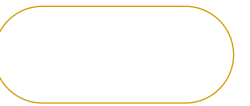
Three Bedroom + Two and a Half Bath + Bay
All room sizes are approximate.



First Floor



Second Floor



Community Features

- Clubroom with Coffee Bar
- Fitness Center
- Business Center
- Detached Garages Available
- Swimming Pool with Sundeck
- Tot Lot
- Small Pets Allowed
- 24-hour On-site Emergency Maintenance

Townhome Features

- Full-sized Washer and Dryer
- Fully Equipped Modern Kitchen
- Private Patio with Yard
- Wall-to-wall Carpeting Throughout
- Breakfast Bar
- Mini-blinds Throughout
- Recessed Lighting
- Central Air Conditioning
- Spacious Walk-in Closets
- High Speed Internet/Cable Available
- Microwave
- Ceiling fans

Discover Villas at Greenview