



Directions

From Route 235, take Chancellors Run Road (Route 237), turn left on Great Mills Road.

Proceed approximately 1/2 mile and turn right on Carver School Blvd.

Park Villas Apartment Homes are located directly behind McKay's Plaza.

PARK

VILLAS

APARTMENT HOMES

21295 Mayfaire Lane, Lexington Park, MD 20653

Tel 301-737-5300 Fax 301-737-5407 Email parkvillas@covepm.com

Professionally managed by



www.covepm.com



We pledge to the letter and spirit of U.S. policy for the achievement of equal housing opportunity throughout the nation. We encourage and support an affirmative advertising and marketing program in which there are no barriers to obtaining housing because of race, color, religion, sex, handicap, familial status or national origin.



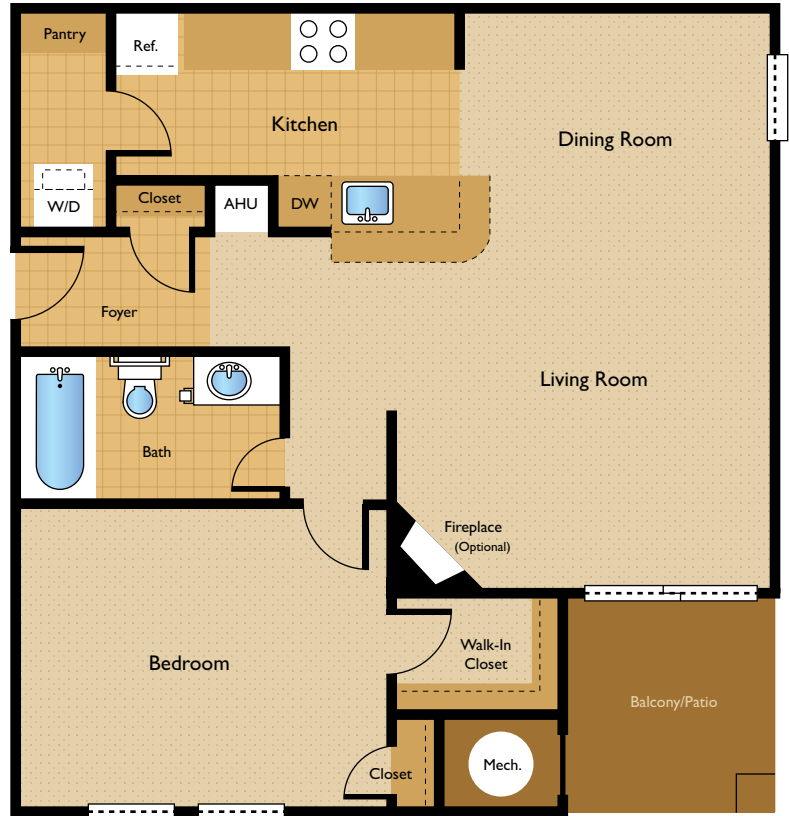
PARK
VILLAS
APARTMENT HOMES



Welcome Home to Park Villas

Apartment Living Has

One Bedroom ■ One Bath



All dimensions are approximate.

Notes _____

Charming in Every Way...

Nestled in a quiet secluded setting, Park Villas Apartment Homes give new meaning to apartment living.

A premier apartment community located in Lexington Park, Maryland, residents enjoy easy access to everything – from shopping and restaurants to high speed Internet access and a state-of-the-art Fitness Center.

Park Villas Apartments features large well designed floor plans with abundant storage and quality finishes. Each home includes private outdoor living space, washers and dryers and fully equipped kitchens with a separate pantry.

Add charm and comfort to your life style.

Welcome home to Park Villas.

Never Been ...

Two Bedroom ■ Two Bath

Apartment and Community Features



All dimensions are approximate.

Notes _____

Apartment Features

- Unique and spacious one- and two-bedroom apartment homes
- Full-size washers and dryers in every unit
- Fully-equipped kitchens including built-in-microwaves, dishwashers, garbage disposals and ice makers
- Energy efficient gas/hot water
- Plush wall-to-wall carpet
- Pantry in kitchen area
- Natural gas-burning fireplaces available *
- Private patio or balcony
- Handicapped accessible apartments available
- Pets are welcome *
- Corporate, short-term and furnished apartments available

Community Features

- State-of-the-art fitness center
- Business Center with Internet
- Sparking swimming pool with sun deck
- Minutes to Highway 235 and the Patuxent River Naval Air Station

* Ask for details, some restrictions may apply.

... So Comfortable